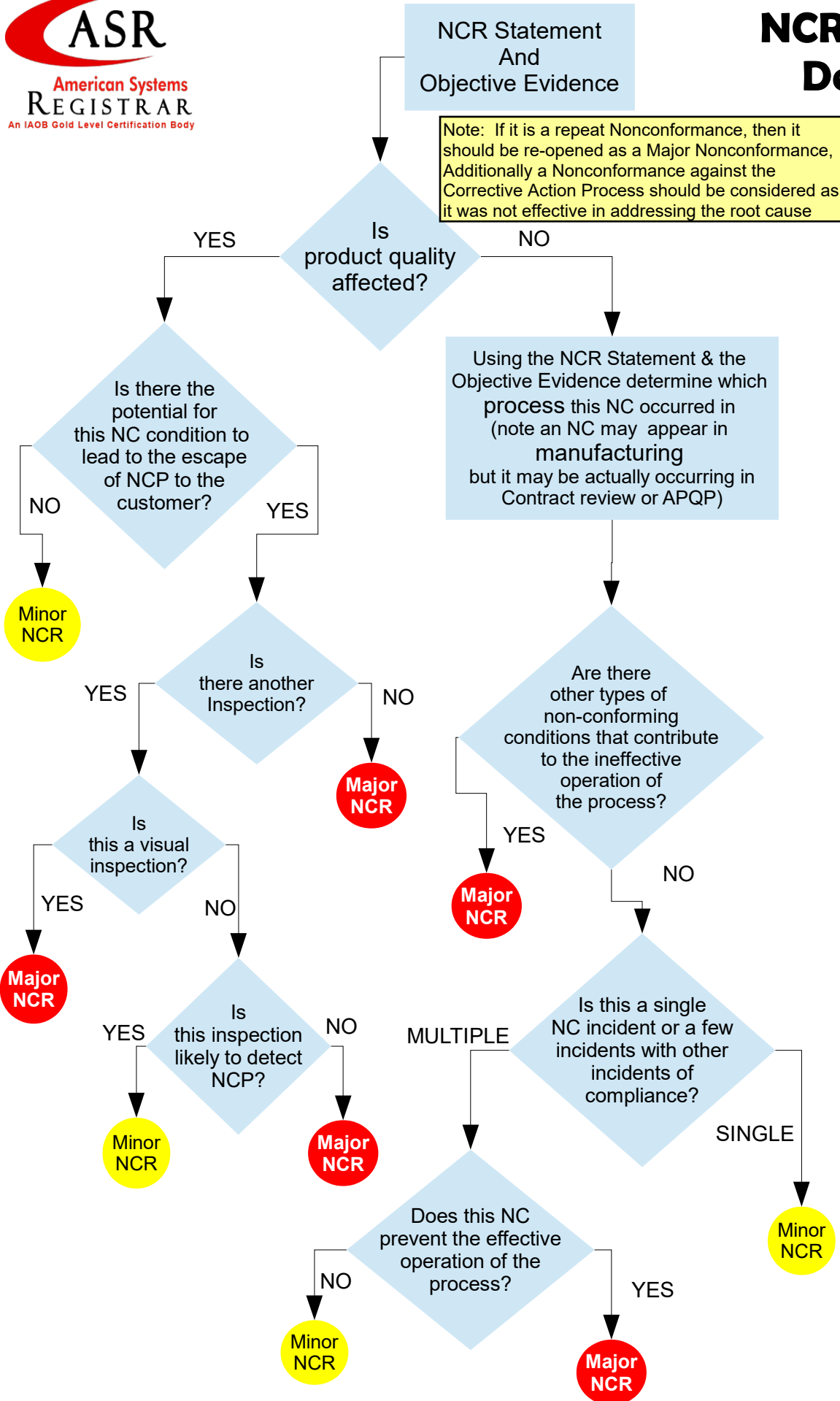


NCR Major/Minor Decision Tree



Determine the process that produces the non-conforming condition.

There may be more than one process to consider for example there could be CSRs that also affect another process

Determine if there are multiple non-conforming conditions in this process; that is are there other types of non-conforming conditions in this process (for example not only are there past due gage calibrations but there are also gages not identified in the gage system).

Determine if there are multiple examples of this single non-conforming condition in this process (for example is there one gage past due or several gages past due for calibration)